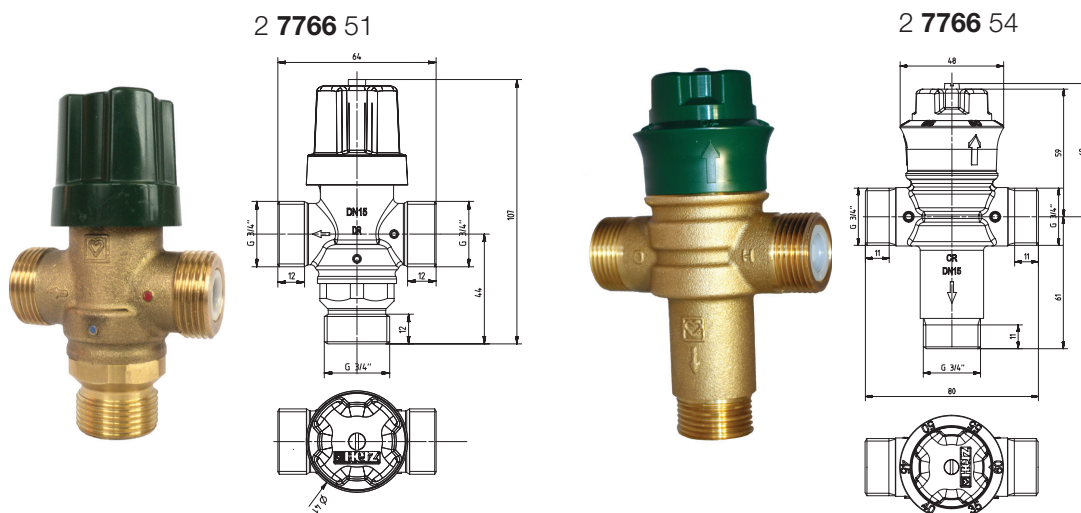
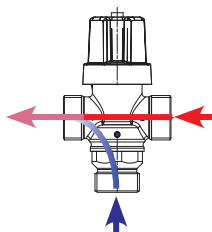


☑ Dimensions in mm

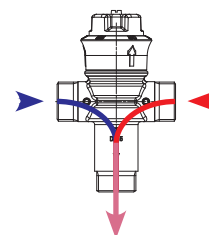


☑ Models

2 7766 51
DN 15
Mixing valve with asymmetric
flow direction



2 7766 54
DN 15
Mixing valve with symmetric
flow direction



☑ Features and benefits

- Optimised thermostat technology for best control quality and longer durability
- Excellent temperature stability with a fast reacting thermostat to reduce the risk of uncontrolled high water temperature
- Designed for high flow-rates and for a stable outlet temperature
- Build-in with check valves in hot and cold water supply
- Body and parts in contact with water are made of dezincification resistant brass

☑ Technical data

	2 7766 51	2 7766 54	
connection thread, thread seal:	G 3/4	G 3/4	
mixing temperature, factory setting:	38	45	°C
set value:	38 - 48	35 - 60	°C
max. hot water inlet temperature:	95	95	°C
min. cold water inlet temperature range:	5 - 25	5 - 25	°C
min. overheat of hot water compared to mixing water:	15	15	°C
mixed water temperature hysteresis:	±2	±2	°C
max. static pressure:	10	10	bar
max. dynamic pressure:	0,2 - 6	0,2 - 6	bar
min. flow:	4	4	l/min
flow at 3 bar:	25	42	l/min

☑ Material

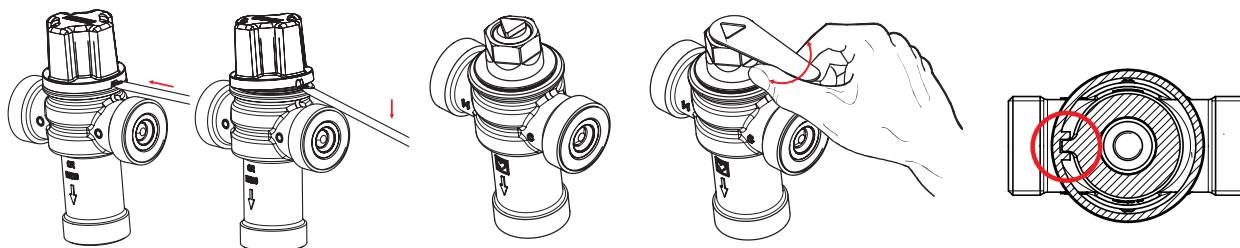
Body: DZR brass CC752S
Spring: Stainless steel 1.4310
Internal parts: DZR brass CW626N
Stem: DZR brass CW626N
Handweel: ABS
Sealing: EPDM

☑ Installation

- The valve should be connected with matching pipe connections - red dot or „H“ for hot water, blue dot or „C“ for cold water. The connection „MIX“ is the mixing water outlet and is to connect with the tap
- The place of installation has to be chosen so that the connected valve can still be adjusted
- Suitable for vertical and horizontal installation

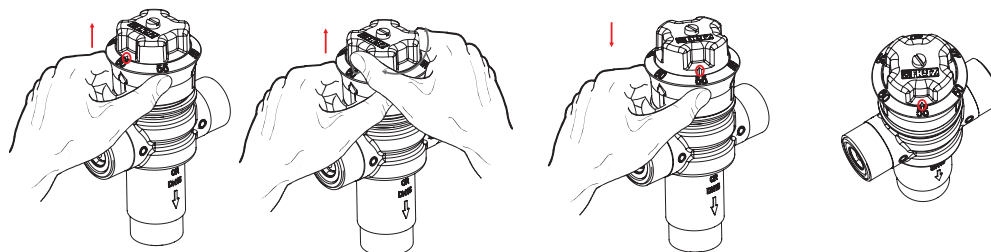
☑ Setting 2 7766 51

- Take care of proper function of hot water supply before setting the valve
- Check the water temperature on the tap next to the valve
- Flush the water for 1 minute to make the temperature stable
- Remove cover cap
- Set the temperature by turning the handwheel with the setting tool. Turning clockwise decreases, turning anti-clockwise increases the temperature
- Fix the cover cap again



☑ Setting 2 7766 54

- Pull the handwheel.
- Turn it to the required position (see marking on the cover cap).
- Pull the handwheel back.



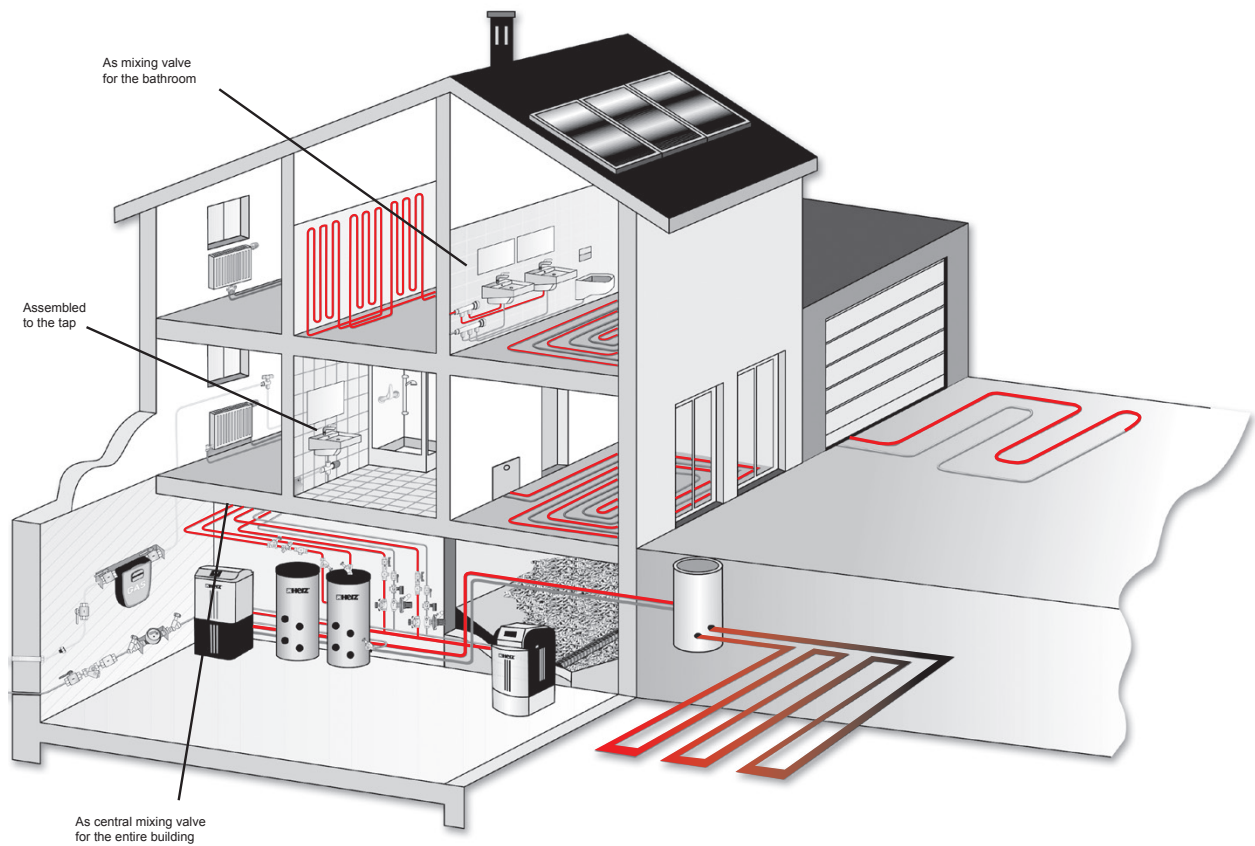
☑ Important notice

- It is recommended to check the device minimum once a year. In case of unknown or poor quality of water a revise is recommended more often.
- The test of the output temperature has to be carried out in the same ways as by new installation and must not differ from the set temperature by more than ± 2 °C.
- The check valve has a good access for cleaning. It is recommended to use long-nose pliers to pull the check valve out of the valve's body. Levering out the check valve causes damage.
- Apart from removing the hand wheel and cleaning the check valve no other dismounting due to maintenance is necessary.

☑ Safety notice

- Please note that the applied valve is a safety valve. It is recommended to replace it in every 5 years.
- Local standards and regulations have to be followed

☑ Examples of application



All specifications and information within this document are reflecting the information available at the time of going to print and meant for informational purpose only. Herz Armaturen reserves the right to modify and change products as well as its technical specifications and/or its function according to technological progress and requirements. All diagrams are indicative in nature and do not to be complete. It is understood that all images of Herz products are symbolic representations and therefore may visually differ from the actual product. Colours may differ due to printing technology used. In case of any further questions don't hesitate to contact your closest HERZ Branch-Office.